



TACOMA
RAILING

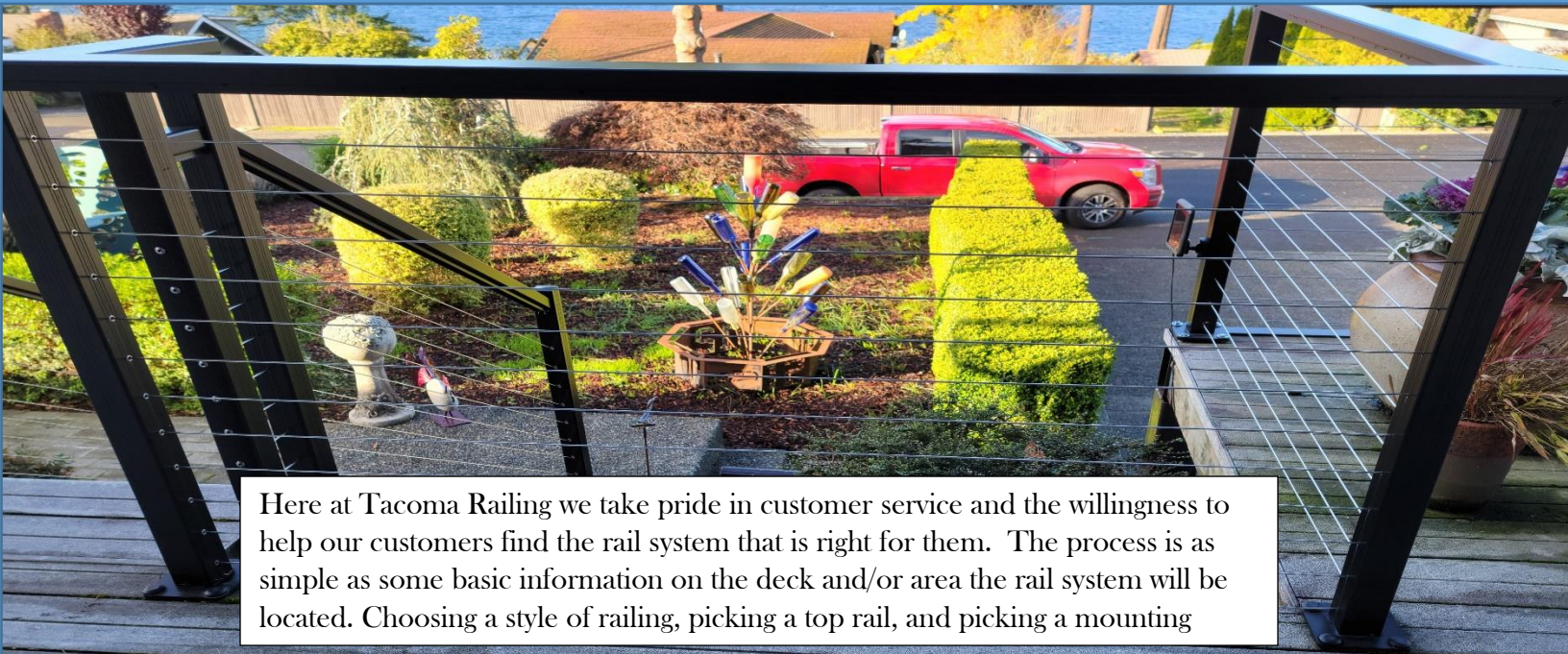
DIY Aluminum Railing Systems

Step one: Pick Design

Step two: Purchase Products or Get a Quote

Step three: Install & Enjoy your new railing system!

Design DIY Railing System



Here at Tacoma Railing we take pride in customer service and the willingness to help our customers find the rail system that is right for them. The process is as simple as some basic information on the deck and/or area the rail system will be located. Choosing a style of railing, picking a top rail, and picking a mounting

01 Choose a Style of Railing



Cable Railing System

Benefits of Cable Railing System:

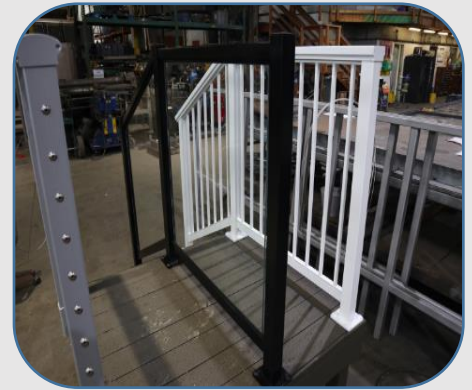
- Ease of Installation
- Home Esthetic Value Increase
- High Resistant to Corrosion
- Little Obstruction to Views
- Low Maintenance Cost



Picket Railing System

Benefits of Picket Railing System:

- Ease of Installation
- Classic Style
- Low Maintained
- Durable
- Customizable



Glass Railing System

Benefits of Glass Railing System:

- Little Obstruction from Views
- Home Esthetic Value Increase
- Low Maintenance cost

02 Pick a Top Rail Style

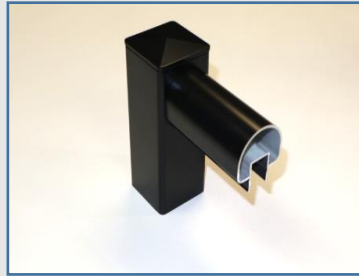
Ellipse Guardrail



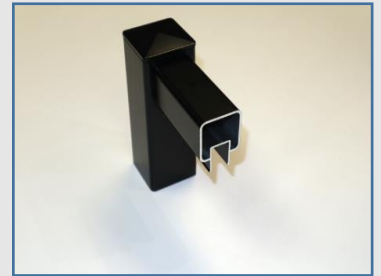
Rectangle Guardrail



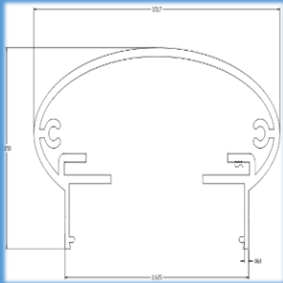
Round Guardrail



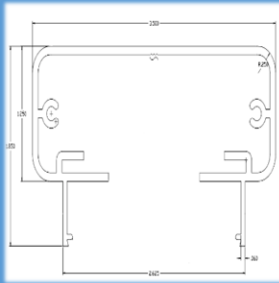
Square Guardrail



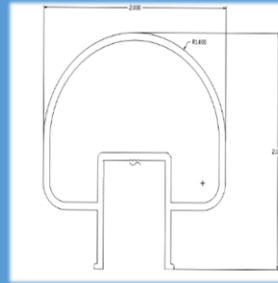
Ellipse profile



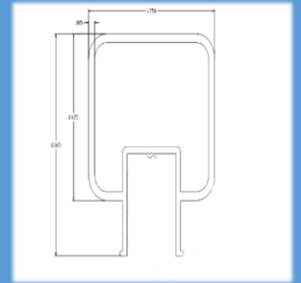
Rectangle Profile



Round Profile



Square Profile



03 Pick a Mounting Style



Surface Mounted Post



Side Bracket Mount



Direct Side Mount

This style is directly connected to the deck, stair, stair tread, and any surface face available and most common. This style will come pre-assembled with a 3/8" base plate already attached to the post. The 3/8" full threaded lag bolts, washers and caps will also be included.

This style uses a side bracket mount. This mounting style is utilized when the flashing extends passed the rim joist and user wants the posts to be side mounted.

This style does not come pre-assembled.

This style is also a side mounting but without a bracket. This can only be used if rim board and fascia is flush with each other.

The Post is attached directly to the side surface and must be completely flush.

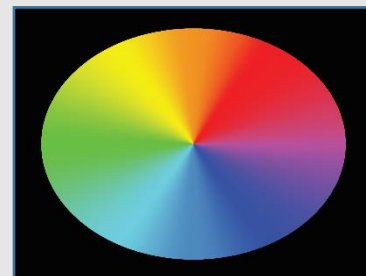
04 Pick a Powder Coat Finish

Stock - Black

Stock - White

Stock - Silver

Custom Color



Here at Tacoma Railing we have an in house powder coating team. For railing we offer 3 stock colors which are Black, White, and Silver. If you are looking for a custom color option we ask that you reach out to us so we can find the color that works best for your needs. Note that custom color option tend to be more costly than going with a stock color.

Finding Total End, Corner, and Intermediate Posts

Example: Finding Number of Posts Needed

First: Locate the number of corner posts and end posts your deck will need. Example: figure to the right. (Note your deck may differ from the example)

Total Number of End Posts _____

Total Number of Corner Posts _____

Total Number of Intermediate Posts _____

Note: Use the Chart Below to find the total number of Intermediate posts needed for each side of deck. Tveiw example to the right.

Not Counting End Posts, This is the number of Intermediate Posts

5' - 9' = 1 Post	35' - 39' = 7 Post
10' - 14' = 2 Post	40' - 44' = 8 Post
15' - 19' = 3 Post	45' - 49' = 9 Post
20' - 24' = 4 Post	50' - 54' = 10 Post
25' - 29' = 5 Post	55' - 59' = 11 Post
30' - 34' = 6 Post	60' - 64' = 12 Post

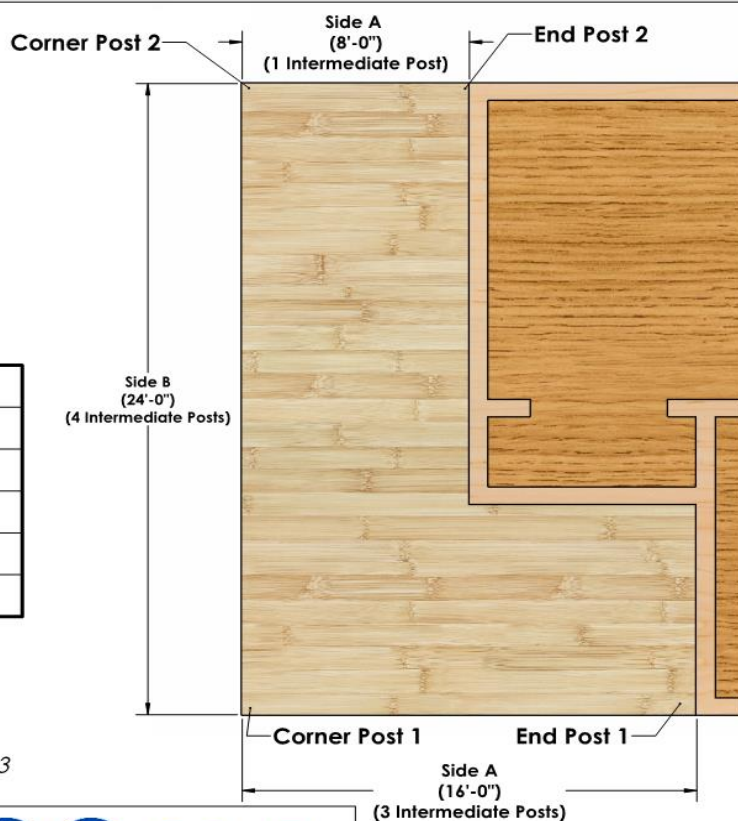
Example for figure to the right:

Total Number of End Post = **2**

Total Number of Corner Post = **2**

Total of number of Intermediate Post = **8** (Example Below)

(Side A = 1 Intermediate Post, Side B = 4 Intermediate Posts, Side C = 3 Intermediate Posts)



DATE: Monday, January 31, 2022 2:00:44 PM

SIZE	FOR CONSTRUCTION	REV
DRAWING NAME:		
Finding # Of Posts		
DRAWN BY: D. Baughman		

SHEET 2 OF 2

Tacoma Railing
 939 East F Street
 Tacoma, WA 98421
 Phone: 253-593-4710
 Fax: 253-593-4709
 E-Mail: Dustin@tacomarailing.com



SAMPLE